

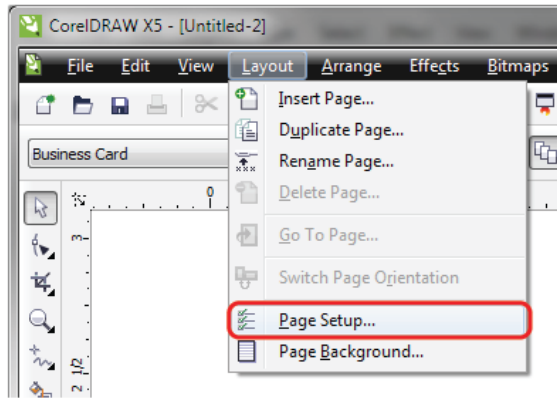
MODULE 6

Setting up Files for Print

1. Document Size Specifications

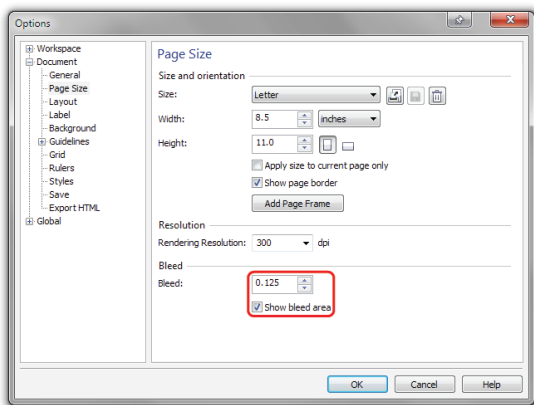
To set up a bleed in CorelDRAW:

Click **Layout > Page Setup...**



In the **Bleed:** box, type in 0.125

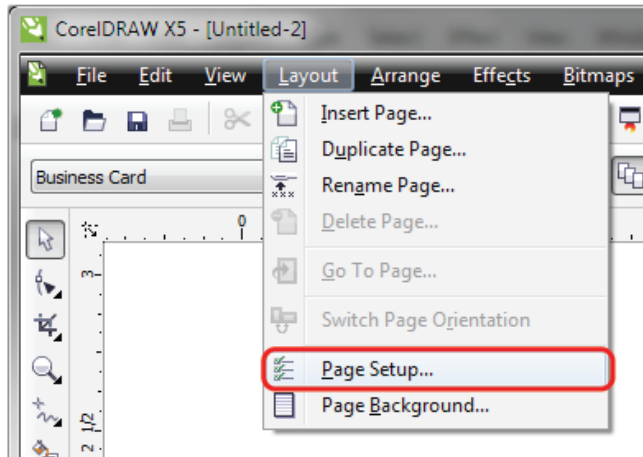
Check "Show bleed area"



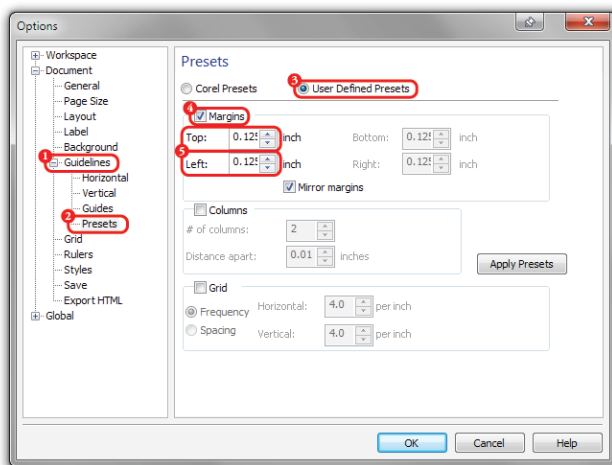
Click **OK**

To set up a safety zone:

Click **Layout > Page Setup...**

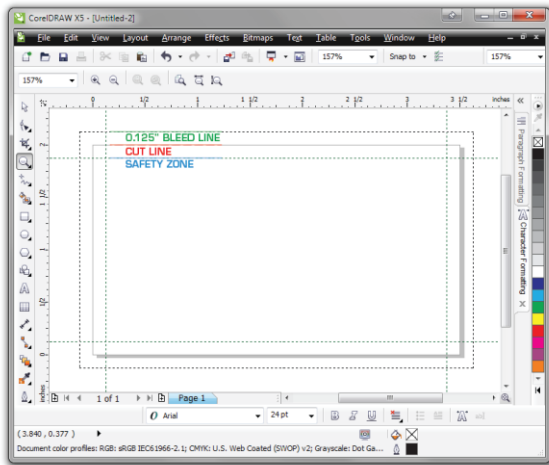


- Click the + to **expand Guidelines**
- **Click Presets**
- Click the **User Defined Presets** round button
- Check "**Margins**"
- Type in 0.125 into the Top and Left boxes (if mirror margins is checked it will fill in the rest)



Click OK

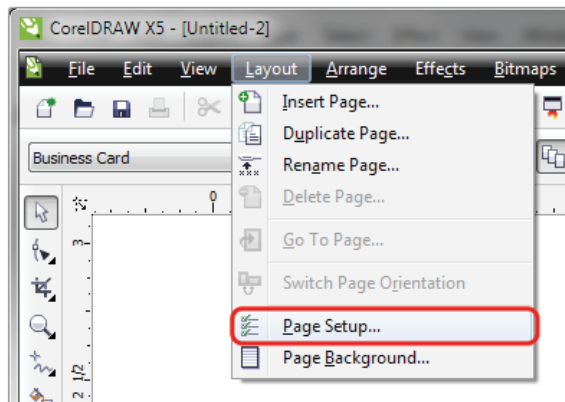
You'll now see the lines as shown (labels added for illustrative purposes)



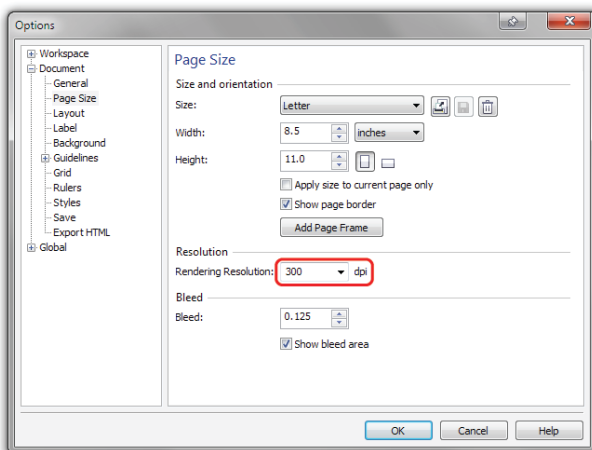
2. Resolution

To ensure your outputted PDF from is at 300DPI:

Click **Layout > Page Setup...**



In the **Rendering Resolution box**, choose **300 dpi**

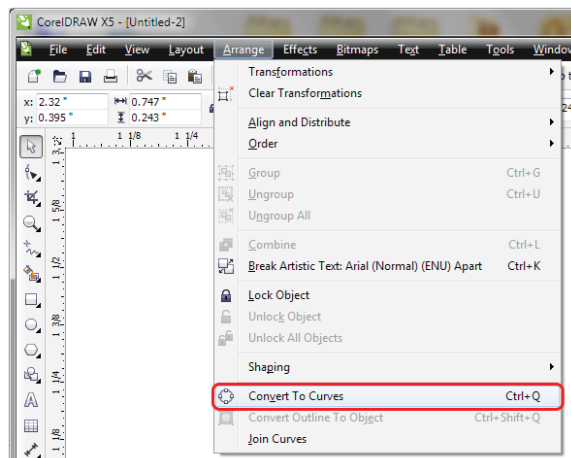


3. Typography

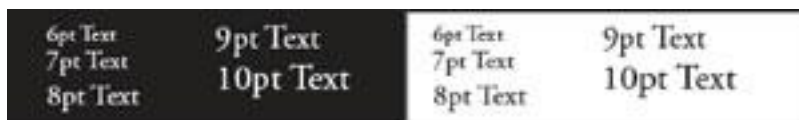
Before proceeding - save a **backup copy of your file** to make changes to later.

To convert text to outlines

- **Press Ctrl+A** (to select All)
- **Click Arrange > Convert To Curves**



When printing reversed text, such as white on rich black or dark colors, with small type below 8-pt, you should add a thin stroke (between .1pt to .25pt) of white (or light color) to compensate to avoid color overlapping and filling the text:



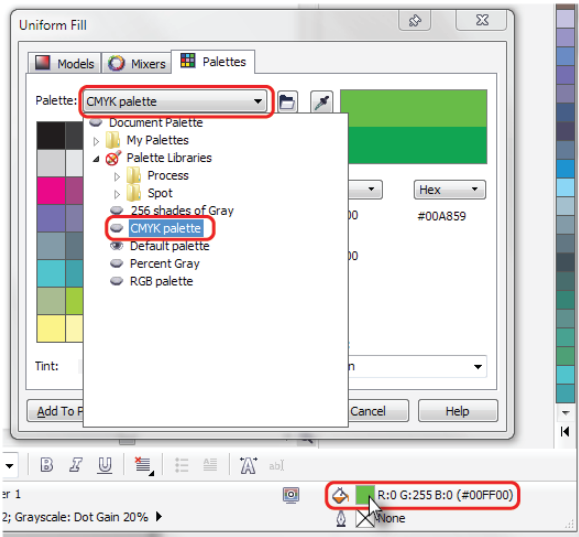
4. Color & Black

To ensure your CorelDRAW file is in CMYK:

For each object with a fill:

1. **Select** each object you want to convert.
2. **Double Click** on the color swatch at the bottom right, to bring up the **Fill Color Dialog**.

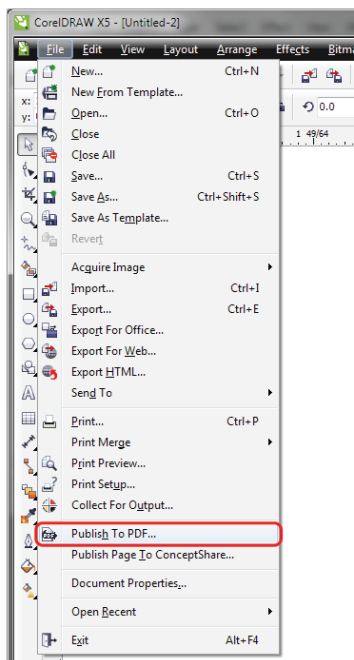
3. Click the **Palette:** dropdown box
4. **Select** CMYK palette (if not already selected)
5. **Click OK** (*Note: if you were using an RGB color, it may drastically change, the color must be CMYK*)



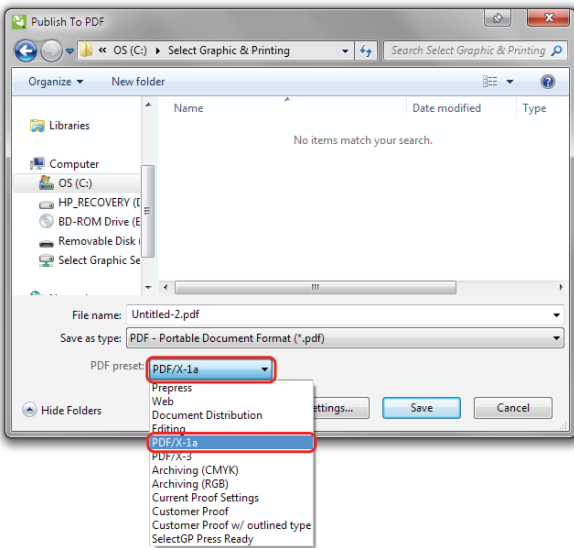
5. Saving Your File

To save as a **PDF** with a bleed:

Click **File > Publish To PDF...**



Choose PDF/X-1a from the PDF preset list.

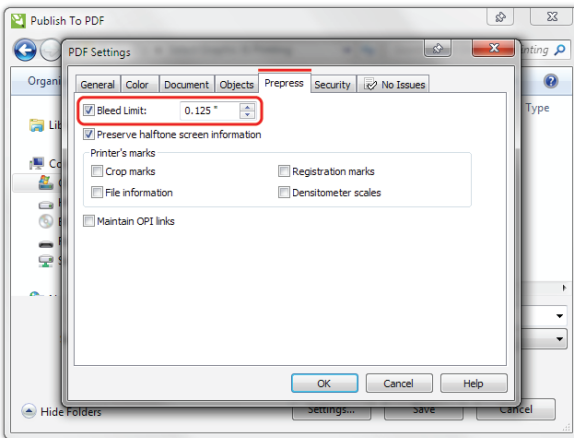


Settings... button

Click the Prepress tab

Check the "Bleed Limit:" box

Type in 0.125 (if it's not already entered)



Click OK

Click Save

Open your PDF to verify it looks okay.