

MODULE 7

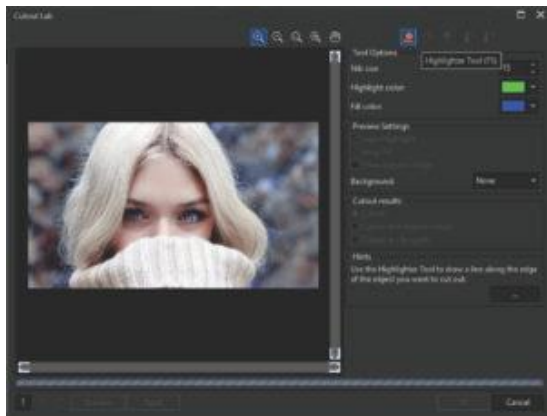
How to Delete the Background in CorelDRAW

Method 1: Removing Backgrounds with the Cutout Lab in PHOTO-PAINT

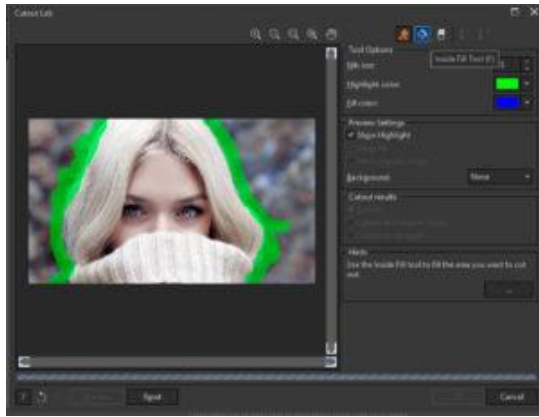
What about more complex selections, like hair? Or when it is **very difficult to select the background**? The answer is PHOTO-PAINT's **Cutout Lab**.



Again, select the image in CorelDRAW and **click** the **Edit Bitmap** icon. When your image opens in PHOTO-PAINT, go to **Image > Cutout Lab**. The **Cutout Lab** will open in a new dialog box. By default, the **Highlighter** tool is activated (top right).

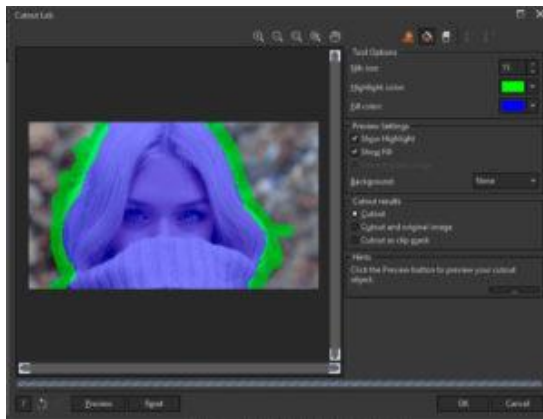


Use the **Highlighter** tool to trace the edge of the area you want to separate. It doesn't have to be exact, but the better defined, the better the result. We can change the **thickness** by adjusting **Nib** size, and you will also have an **Eraser** tool to correct the selection.



NOTE: It's important that the selected area is a “closed” area, since next you are going to be filling it in. If there is an open area, the fill won't apply correctly.

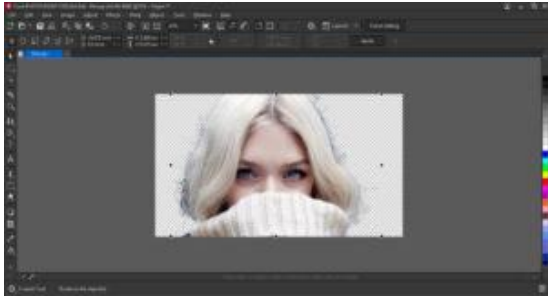
Once you're happy with your outlined area, select the **Inside Fill** tool and click in the interior of the area, which will **fill it** with blue.



TIP: You can change the **Highlight color** and **Fill color** to fit your preference. For example, if your image has a lot of blue and green, you might want to change the **Highlight** or **Fill color** so that it is easier to see.

The **Cutout results** section offers a few options:

- **Cutout** (default option) will cut the image and discard the original so the actual size in pixels will be smaller and therefore the image file size will be lower.
- **Cutout and original image** will create an object from the cutout and preserve the original image, keeping the image size the same.
- **Cutout as clip mask** will make the cut by generating a layer mask (similar to what you get with the Mask tools).



Click Ok in the **Cutout Lab** to apply your changes. Then like in the previous examples, just select the **Finish Editing** button or close the program. If you have not saved your image, the program will prompt you to do so, in which case **click Yes**.

And now your image is ready to be applied on a different background in CorelDR AW, which can be vector or it can be another image.



However, if you want the result to be more realistic, the best option is to use PHOTO-PAINT to apply the background. Select the whole image (**Mask > Select Entire Image** or **Ctrl + A**), then copy it (**Edit > Copy** or **Ctrl + C**).

Open your new background image (**File > Open** or **Ctrl + O**) and paste the cutout image (**Edit > Paste** or **Ctrl + V**). That will place it as a new object, and you can adjust the size and position as needed.

TIP: I recommend that you select images that are as close in size and resolution as possible, so that the fusion of images is more realistic.

